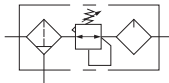


## 符号/Symbol



## 规格/Specification

保证耐压力/ Ensured Pressure Resistance	1. 5MPa(15kgf/cm <sup>2</sup> )
最高使用压力/Highest Working Pressure	1.0MPa(10kgf/cm <sup>2</sup> )
环境及流体温度/ Ambient and Fluid Temperature	5~60°C
*过滤精度/ *Filter Precision	25µm
建议用油/ Recommended Oil Use	透平1号油/ Turbine No1 Oil ISOVG32
容器材料 Container Material	聚碳酸酯/ Polycarbonate
防护罩 /Protective Cover	AC2010(无/Not Available) AC3010~5010(有/Available)
调压范围 /Pressure Regulating Range	AC2010~5010: 0.05~0.85MPa(0.5~8.5kgf/cm <sup>2</sup> )
阀型/Valve Type	带溢流型/ With Overflow

\*还有5、50µm可供选择。 / \*5,50µm are available

型号/Model		规格/Specifications					配件 /Accessories	
		组件/Assembly		注2)额定流量 (Note 2)Rated Flow(L/min)	注3)接管口径 (Note 3) Port Size(G)	压力表口径 /Pressure Gauge Size	托架 /Bracket	压力表 /Pressure Gauge
手动放水型/ Manual drain	注1) 自动排水型/ Note 1) Auto drain	过滤减压阀/ Filter Regulator	油雾器/ Lubricator					
AC2010-02	AC2010-02D	AW2000-02	AL2000-02	500	1/4	1/8	Y20T	G36-10-01
AC3010-02	AC3010-02D	AW3000-02	AL3000-02	1700	1/4	1/8	Y30T	
AC3010-03	AC3010-03D	AW3000-03	AL3000-03	1700	3/8	1/8	Y30T	
AC4010-04	AC4010-04D	AW4000-04	AL4000-04	3000	1/2	1/4	Y40T	G46-10-02
AC4010-06	AC4010-06D	AW4000-06	AL4000-06	3000	3/4	1/4	Y50T	
AC5010-06	AC5010-06D	AW5000-06	AL5000-06	4000	3/4	1/4	Y60T	
AC5010-10	AC5010-10D	AW5000-10	AL5000-10	4000	1	1/4	Y60T	

注1) AC2010有两种自动排水结构可选，脉冲式自动排水器为常规选型，还有杠杆式自动排水器可选，订货时用“D2”表示；AC3010-AC5010自动排水器结构以杠杆式为常规选型，还有浮球式自动排水器可选，详细说明请参阅自动排水器介绍。

注2) 供应压力为0.7MPa(7.1kgf/cm<sup>2</sup>)设定压力为0.5MPa(5.1 kgf/cm<sup>2</sup>)的情况下。

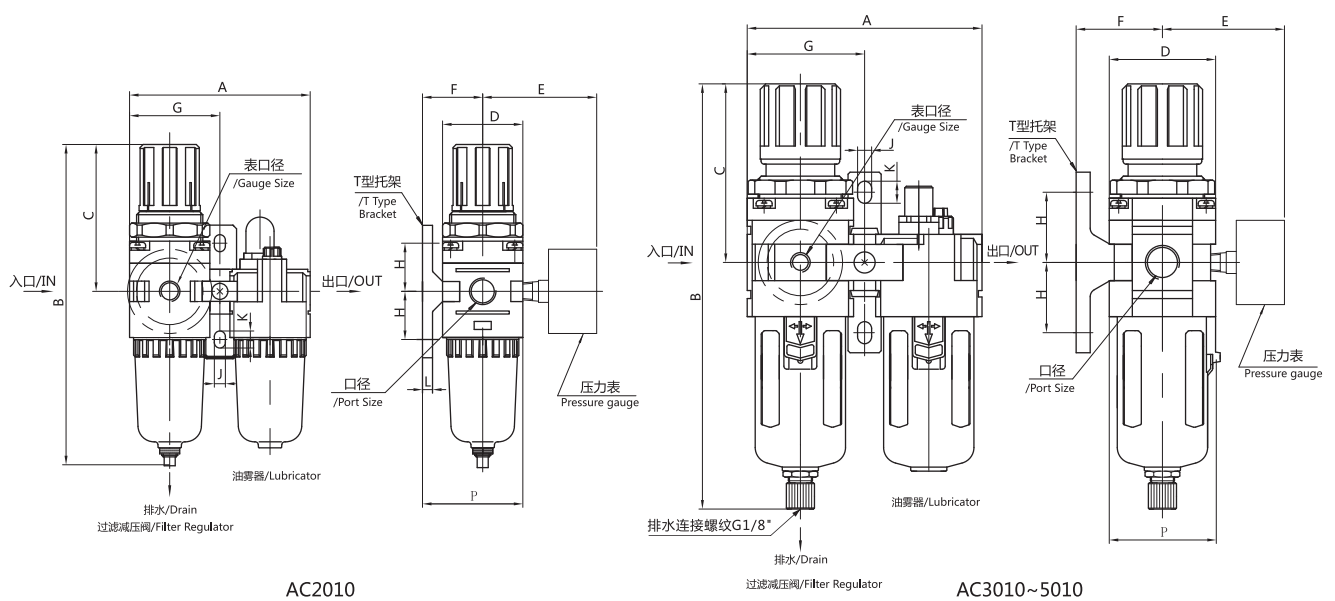
注3) 接管口径另有Rc、NPT螺纹可供选择。

Note 1) There are 2 types auto drain for AC2010, pulsed type and lever type. "D" means normal auto drain, pulsed type: "D2" means lever type auto drain. The normal auto drain for AC3010-AC5010 is lever type, but the float type auto drain is available for choose. Please check the details from AUTO DRAIN in page 70.

Note 2)The inlet pressure is 0.7MPa(7.1 kgf/cm<sup>2</sup>), the set pressure is 0.5MPa(5.1kgf/cm<sup>2</sup>).

Note 3)Rc ,NPT thread are available.

## 外形尺寸图/Overall Dimension Drawing(mm)



## 尺寸表/ Dimension Sheet (mm)

型号/Model	接管口径 Port Size(G)	压力表口径 /Pressure Gauge Size	A	B	C	D	E	F	G	H	J	K	L	P
AC2010-02	1/4	1/8	90	158	78	40	56.8	30	45	24	5.5	8.5	5	50
AC3010-02	1/4	1/8	117	208	92.5	53	60.8	41	58.5	35	7	11	7	70.5
AC3010-03	3/8	1/8	117	208	92.5	53	60.8	41	58.5	35	7	11	7	70.5
AC4010-04	1/2	1/4	154	256	112	70	70.5	50	77	40	9	13	7	88
AC4010-06	3/4	1/4	164	261	114	70	70.5	50	82	40	9	13	7	88
AC5010-06	3/4	1/4	195	338	116	90	75.5	69.8	97.5	50	12	16	10.5	115
AC5010-10	1	1/4	195	338	116	90	75.5	69.8	97.5	50	12	16	10.5	115

\* 标注尺寸为杠杆式自动放水器高度尺寸。

\* This dimension is for lever type auto drain.